



MonitAIR®

User Manual

Ver. 1/2014



WestwoodOne

STORQ MonitAIR User Manual

© 2014 WestwoodOne

All rights reserved. No parts of this work may be reproduced in any form or by any means - graphic, electronic, or mechanical, including photocopying, recording, taping, or information storage and retrieval systems - without the written permission of the publisher.

Products that are referred to in this document may be either trademarks and/or registered trademarks of the respective owners. The publisher and the author make no claim to these trademarks.

While every precaution has been taken in the preparation of this document, the publisher and the author assume no responsibility for errors or omissions, or for damages resulting from the use of information contained in this document or from the use of programs and source code that may accompany it. In no event shall the publisher and the author be liable for any loss of profit or any other commercial damage caused or alleged to have been caused directly or indirectly by this document.

Printed: January 2014

Technical Editors

Kelly Kittleson

Technical Support

(888)HELP-450 (435-7450)

Table of Contents

	Page Number
Part 1 MonitAIR Basics	4
1.1 The Main Screen & Log Viewer	4
1.2 Getting Started	5
1.3 Configuration of Storq	6
Part 2 Monitair Setup	7
2 RBDS Streaming	7
2.1 Setup of RBDS	7
3 Web Streaming (FTP)	8
3.1 Setup of Web Streaming	8
4 Web Control – Now Playing/Metadata	9
4.1 Setup of Web Control	10

1 MonitAIR Basics

The MonitAIR program is a utility for interfacing the WestwoodOne's STORQ Delivery System with Radio Broadcast Data Systems (RBDS) compatible equipment. Affiliates like you have wanted an easy-to-use interface for getting the currently airing item ported over to listeners radios. We at WestwoodOne have listened, and are happy to bring you this exciting software.

The MonitAIR program is more than an RBDS interface. It also comes with ability to output the currently airing item as a text file for use online. Now you can easily interface your on-air product with your website.

1.1 The Main Screen & Log Viewer

MonitAIR is simple looking on the face. A scrolling marquee at the top, followed by an error display line and status icons at the bottom. Below the MonitAIR window is the movable Log Viewer window.



Log Viewer

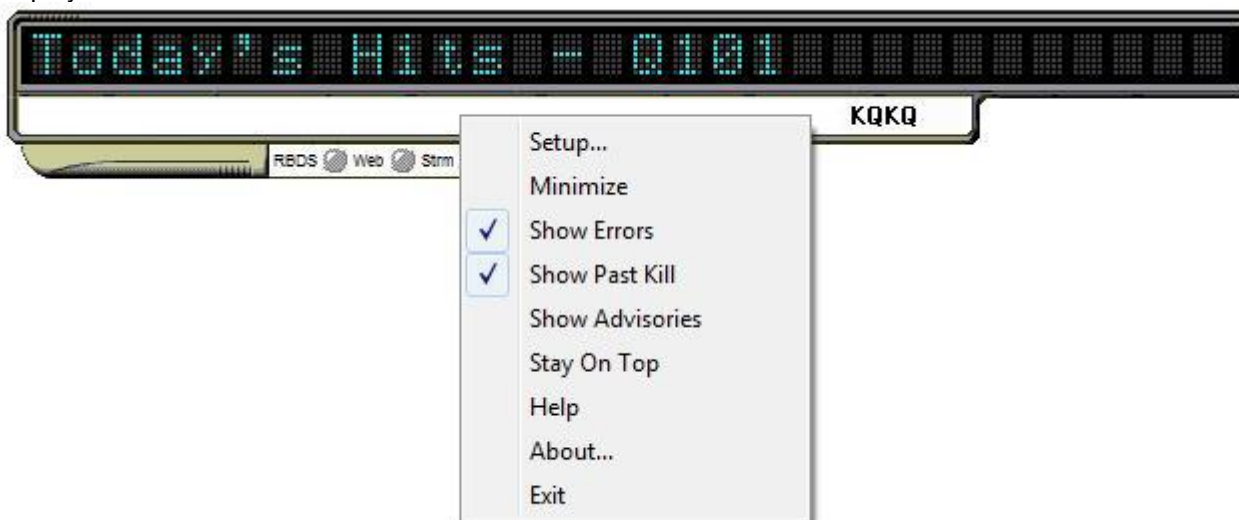
All data the MonitAIR software receives is written to an internal log called Log Viewer. Using the checkmark icon you can toggle the Log Viewer window on or off. The window is detachable from the MonitAIR marquee and shows a similar history to that of the STORQ computer. This is especially useful for persons like the Program Director for quickly catching past killdate or missing cuts.

Before you begin to use MonitAIR, consider some of the common uses for the software:

- **RDS Interface:** This software sends serial data between STORQ and 3rd party hardware.
- **Web Server Interface:** Use MonitAIR to update a text file listing of the currently airing item.
- **Remote Monitoring:** Run the software on your desktop to keep an eye out for errors.
- **Lobby Display:** Put it on a screen in the lobby to greet visitors with what's currently on the air.

1.2 Getting Started

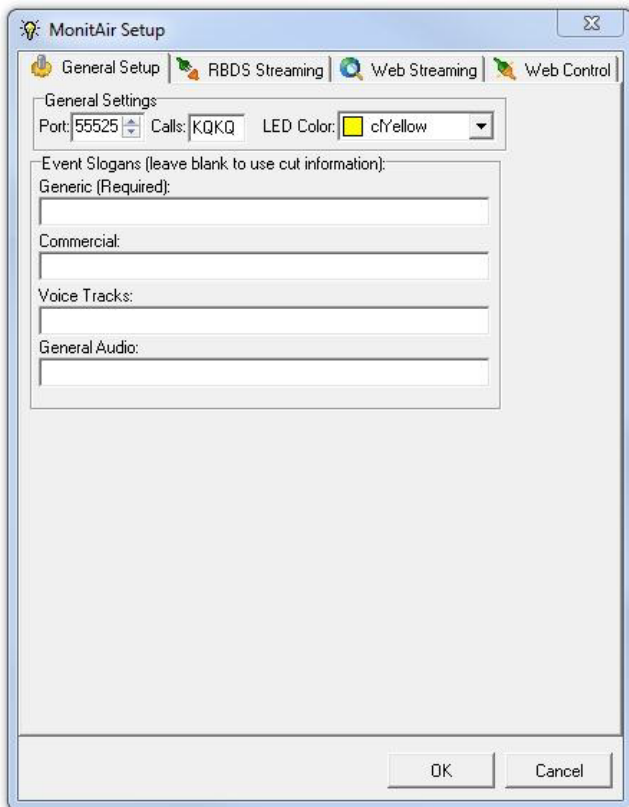
To use MonitAIR, some basic information must be entered. Place your cursor anywhere in the marquee and right-click to display the main menu.



Here's a brief look at each menu choice:

Setup...	Displays the General Setup page for settings, RBDS, and web server options.
Minimize	Minimizes the MonitAIR window and places it as an icon in the system tray.
Show Errors	Toggle this setting on/off to display errors under the marquee.
Show Past Kill	Toggle this setting on/off to display outdated cut errors under the marquee.
Show Advisories	Toggle this setting on/off to display all logged advisories under the marquee.
Stay on Top	Toggle this setting to keep MonitAIR displayed over all other windows.
About...	Displays the about screen.
Exit	Exit/Closes the program.

Select the first menu choice "Setup..." to get started. Your screen should look like this:



General Setup Tab

Most of the information on this page is optional and is used to customize the way MonitAIR looks.

- **General Settings**

Set the port the STORQ system is sending its data on. By default, its set to port 55525 on both the STORQ computer and the MonitAIR software.

You can change this number if needed, especially if you have multiple computers at the same location. The "Calls" field is a place to enter your call letters, such as KQKQ.

The "LED Color" field lets you select a various choices of colors for your MonitAIR marquee display.

- **Event Slogans**

These fields allow you to customize the message MonitAIR displays. Again, you should enter something into the generic field for times when MonitAIR is either sitting idle or processing items that shouldn't be displayed.

Any text you insert into the "Commercial", "Voice Tracks", and "General Audio" fields will be substituted into the marquee whenever your system airs these types of audio.

TIP Leaving the Event Slogans blank will display the cut titles for each type of audio. For example, to see your commercials on the marquee, leave the "Commercial:" field blank. When you are finished making changes to this page, click the "OK" button and then exit the MonitAIR software. **The changes you have made will not take effect until a restart of the software.** After starting MonitAIR again, you should see the marquee begin to display messages.

TIP If you do not see messages begin to scroll in the MonitAIR program, first check the setup of the STORQ computer. By default the on-air will have the RBDS output turned off. For further help setting up your STORQ machine, look at the **RBDS Setup** section in 1.3 (Configuration of STORQ). Keep in mind the port values on both the MonitAIR software and the STORQ computer must agree for the data communication to work.

1.3 Configuration of STORQ

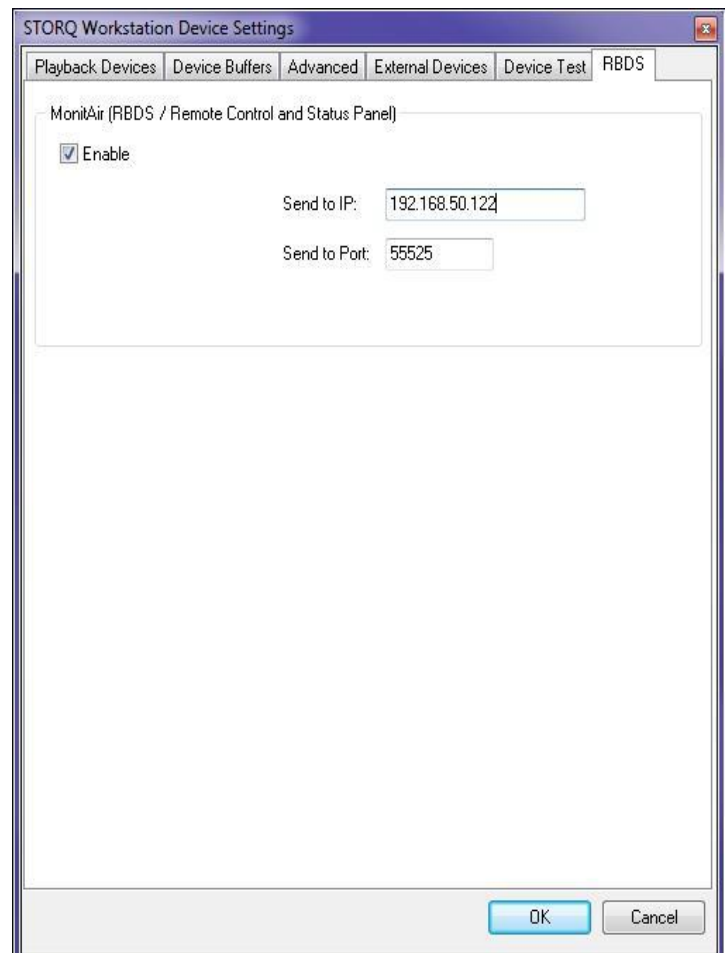
Setting Your On-Air STORQ Computer to Send RBDS Data to MonitAIR:

1. Navigate to the STORQ main Toolbar.
2. Under the 'Tools' menu select 'Device Settings'.
3. In the RBDS tab, make sure the 'Enable' checkbox is checked.
4. Make sure the "Broadcast to LAN" is also checked.
5. Click "ok" and restart Storq Software Fill in the three fields as follows:

*** Required for Now-Playing data for stream providers, ie. Stream The World, Abacast, SecureNet Systems, Liquid Compass and more.

To send RBDS data to Windows XP/7 machines:

- **IP Address:** Can be set to the loopback address (127.0.0.1) if MonitAIR will be used on the Storq computer (not recommended to be used on Storq machines if possible).
- **Ports:** This is the UDP port number you want to use to send the RBDS data out. It should be the same for both of the remaining fields. When sending data from multiple STORQ machines on a network, each computer will need to use a unique port number.



NOTE: Windows XP/7 Pro Version or Higher is only supported. Any other Microsoft OS versions such as 2000, ME, Server 2003/2008 and Vista are not supported along with Home or Premium versions of XP and/or Windows 7. Questions? Please contact us.

2 RBDS Streaming

The Radio Broadcast Data System (RBDS) is a way to deliver more information to listeners with RDS-equipped radios. The STORQ computer can be configured to send the currently airing item out as data to a port number of your choice. This data can be read by the MonitAIR program and then relayed to your RDS equipment via a physical serial connection on a COM port you select.

2.1 Setup MonitAIR RBDS

The Radio Broadcast Data Systems (RBDS) setup should take only a few minutes to complete provided you know how your encoder wants to see the serial data. WestwoodOne has several common RDS encoders already defined for your use, but your setup may differ from our basic settings.

- Select the communications port you will be physically connecting to the RBDS equipment and the Pre-Defined Encoder, if available for your RBDS hardware.
- Some RBDS hardware requires special data settings. If yours requires a message before or after the on-air text is sent, enter it into the "Preamble" and "EOM" fields.

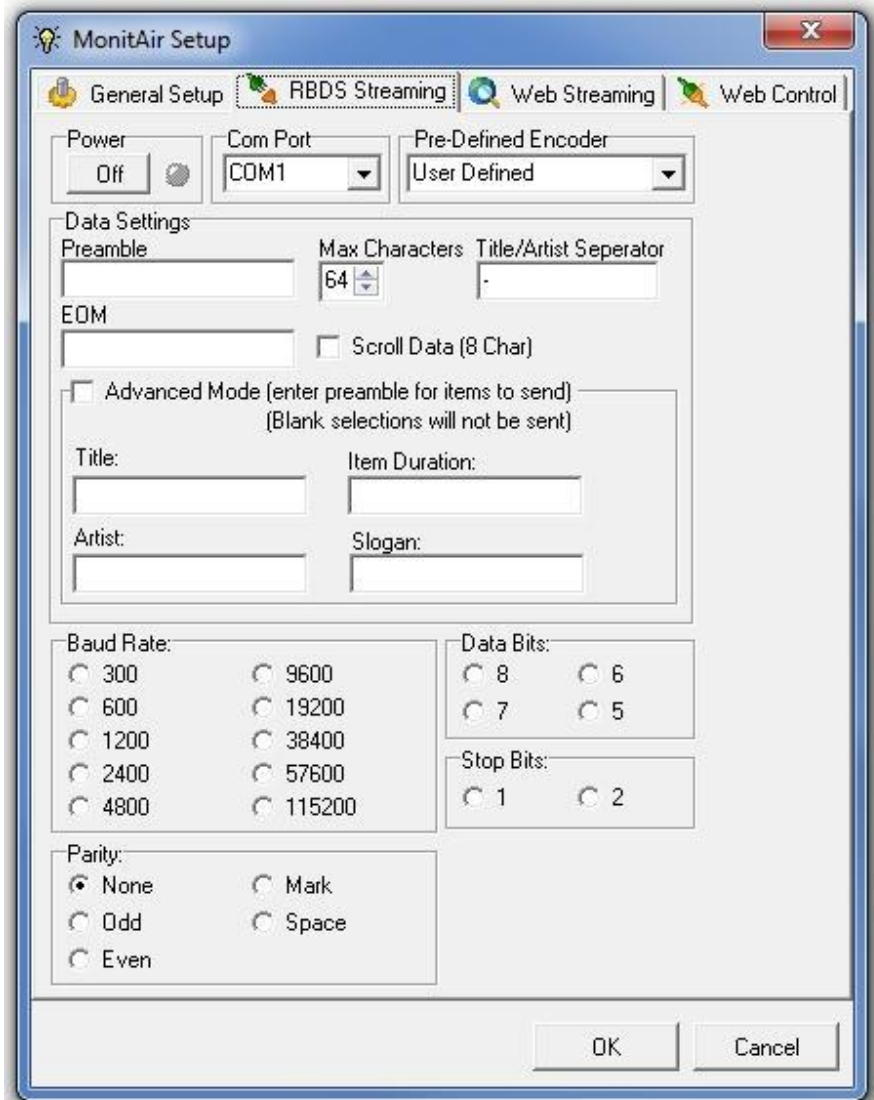
Then just set the parameters for the serial data like any other serial connection.

TIP *The most common COM port settings are 9600 Baud Rate, 8 Data Bits, No Parity, and 1 Stop Bit (9600 8N1).*

- When finished, turn the power on by clicking on the Power button near the upper left corner of the page.

Note:

You will have to restart the MonitAIR software before changes will take effect.



To Test the Output Before Using On Air:

Using another computer with a null-modem connection to the machine running the MonitAIR software, it is possible to see the serial data output before using the system on air. Run Hyper Terminal or similar terminal emulator software program and setup a connection with the same COM port parameters you used in the MonitAIR software. If the connection is working, you will see the data change every time the MonitAIR marquee changes.

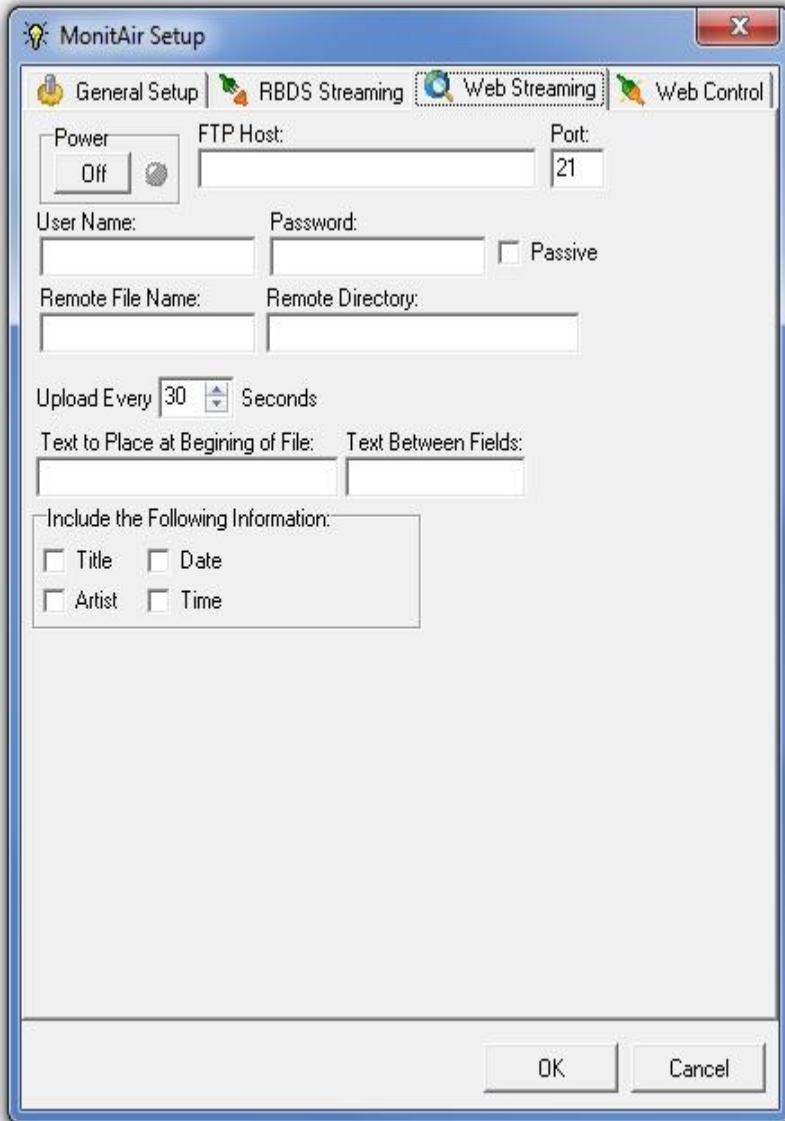
3 Web Streaming - FTP

STORQ now has the ability to include a "what's playing now" page on your website thanks to the MonitAIR software.

These instructions assume you do not have local access to your web/ftp servers. If so, your setup may be slightly different.

3.1 Web Streaming Setup

Setting up a web streaming output is different than the RBDS. You will need to know the file transfer protocol (FTP) login information, the web server FTP IP address, and the FTP port number.



The screenshot shows the 'MonitAIR Setup' dialog box with the 'Web Streaming' tab selected. The 'Power' button is set to 'Off'. The 'FTP Host' field is empty, and the 'Port' field is set to '21'. The 'User Name' and 'Password' fields are empty, with a 'Passive' checkbox to the right. The 'Remote File Name' and 'Remote Directory' fields are empty. The 'Upload Every' spinner is set to '30' seconds. The 'Text to Place at Beginning of File' and 'Text Between Fields' fields are empty. The 'Include the Following Information' section has four checkboxes: 'Title', 'Date', 'Artist', and 'Time', all of which are unchecked. The 'OK' and 'Cancel' buttons are at the bottom.

- Enter the IP address to your webserver/FTP machine.

FYI:

Most servers use port 21, but if your server is different you can enter it into the port field.

- Enter your username and password into the appropriate fields--**remember it is case sensitive!**
- In the "Remote File Name" type in the name of the MonitAIR datafile (data.txt by default).
- Type the path to the folder MonitAIR should send its data to into the "Remote Directory" field.
- Select how often to upload this data and check the types of data you want sent to your webserver.

TIP Do not turn the power on for web streaming without entering the ftp host, user name, and password. This will cause MonitAIR to report an error every 30-seconds as it tries to connect to a non-existent server.

Remember, you must restart the MonitAIR software before changes will take effect.

4 Web Control – Now-Playing/Metadata

STORQ now has the ability to push “Now-Playing” or also referred to “Metadata” to stream providers for Artist and Title data to be utilized on stream player technology. This Web Control Module is also utilized to trigger “Ad-Insertion” services from your provider.

Each stream provider has their own specific preference in setup of the data push structure. Please reference their instructions for more help. WestwoodOne also offers support to help you integrate to your online stream provider.

Storq uses a TCP/IP only ASCII output string which connects to a listen-only socket.

Example of TCP/IP String:

3|01/30/2009|17:12:28| 2:33.2|SIXTEEN TONS|TENNESSEE ERNIE FORD

CAT | DATE | Time | Duration | Title | Artist/Client

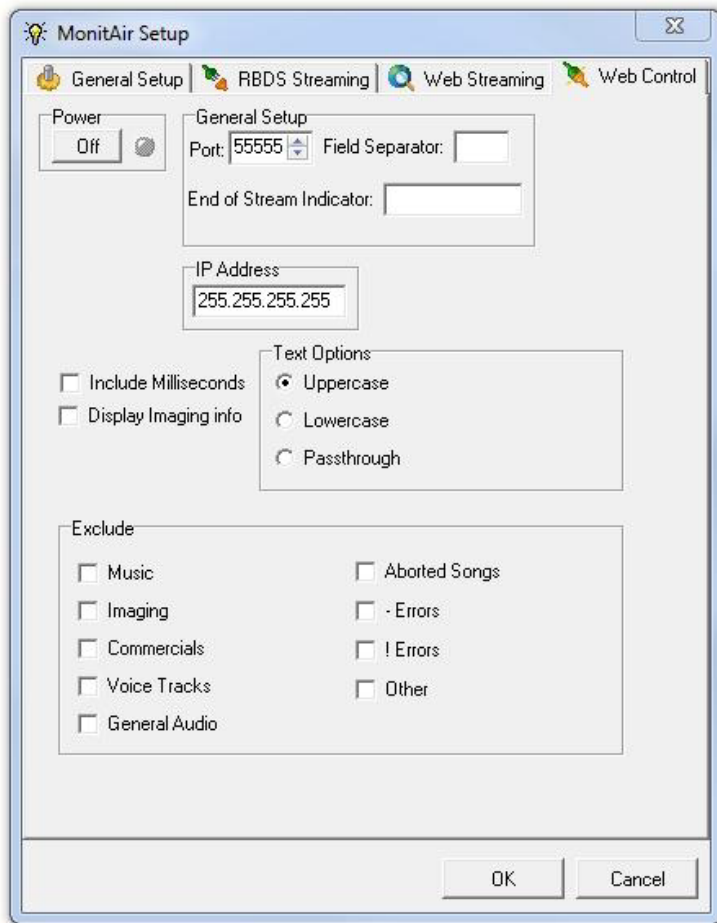
The first character is a category code, of which 3 is Music. Below is a complete list of category codes.

- 1 = General Audio
- 2 = Commercial
- 3 = Music
- 4 = Voice Track
- 6 = Imaging
- 7 = Net Spot
- 9 = PSA

Category codes are used for Ad-Insertion and blackout of network ads.

4.1 Web Control Setup

All the following settings for setup can be provided by contacting your stream provider or also by contacting **WestwoodOne Engineering Support** services at 720-873-5158.



- Set the port to the recommended port that your stream provider will give you. Typical port numbers are: 5000 or 9000
- **Field Separator:** Typically “|” or “^”
- **End of Stream Indicator:** Character that is seen end of string. Typical setup is using “#13#10” which is CRLF or a “^”.
- **IP Address:** If MonitAIR is running on Storq On-Air Machine, enter the IP address of the machine that is running the data ingest software from your stream provider. If MonitAIR is installed on the same machine as ingest software, then please use loopback address (127.0.0.1)
- **Include Milliseconds:** Adds an additional field in the TCP string that gives duration of the audio cut in milliseconds.
- **Text Options:** Changes the casing of Artist/Title text to be all UPPERCASE, lowercase, or Passthrough (Mixed) to be pushed to your provider.
- **Exclude:** Used to Limit Artist/Title fields