

CLASSIC



COUNTRY



Westwood One™



CLASSIC COUNTRY is America's only all classic country 24-hour format. We feature the biggest country songs and artists from the 70's, 80's and 90's. We play songs that most country stations have stopped playing – but listeners still want to hear. Our personalities know country music and engage listeners through contests, requests, and daily features.

Classic Country Programming Details



18+ Demo

- Male: 61%
- Female: 39%

Household Income

- <\$25k: 26%
- \$25k-\$49k: 32%
- \$50k-\$74k: 19%
- \$75k+: 23%

Target Demo

- Core: Adults 45-59
- Target: Adults 40-64

ERA Balance

- 63% 80's
- 15% 70's
- 12% 90's
- 10% 60's

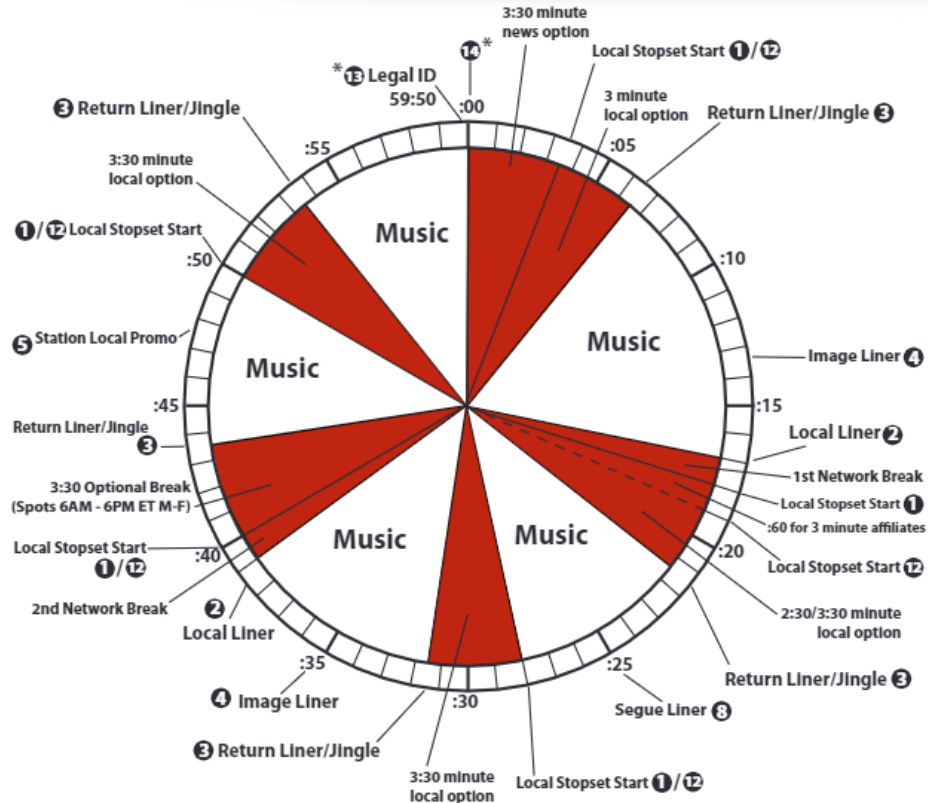
Core Artists

- Alabama
- Willie Nelson
- George Strait
- Hank Williams Jr.
- Conway Twitty
- Barbara Mandrell
- Merle Haggard
- Don Williams
- Ronnie Milsap
- George Jones
- Johnny Cash
- The Judds
- Kenny Rogers
- Reba McEntire

Sample Hour

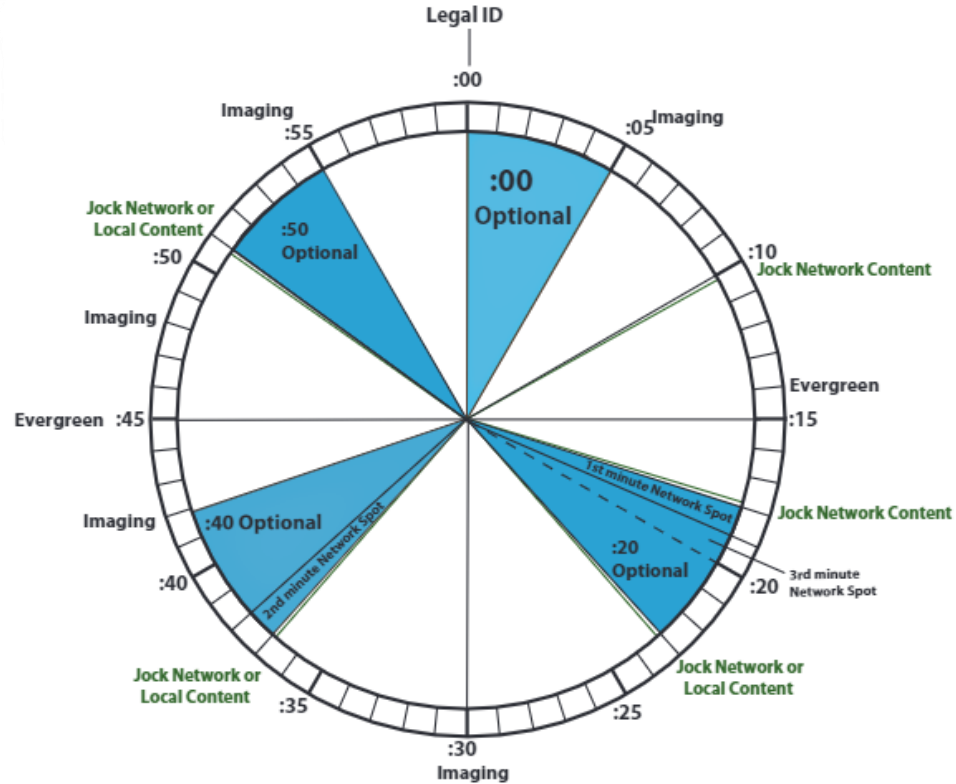
- "Too Cold At Home" – Mark Chesnutt
- "Talk To Me" – Mickey Gilley
- "Back On My Mind" – Ronnie Milsap
- "Why'd You Come In Here Looking" – Dolly Parton
- "Flowers On The Wall" – Statler Brothers
- "Heartland" – George Strait
- "Sleepin' With the Radio On" – Charly McClain
- "Once In A Blue Moon" – Earl Thomas Conley
- "I Can Tell By The Way You Dance" – Vern Gosdin
- "Help Me Make It Through The Night" – Sammy Smith
- "Older Women" – Ronnie McDowell
- "Seminole Wind" – John Anderson

Classic Country TOTAL Clock



Function	Wegener Relay
2min Affiliate Stopset Start	1
Local Liner (:05)	2
Return Liner/Jingle (:10)	3
Image Liner – tags network sweeper (:05)	4
Station Local Promo (:10 max)	5
First Network Minute	6
Second Network Minute	7
Segue Liner (:05)	8
3min Affiliate Stopset Start	12
Legal ID 59:50 (:10)	13
TOH 00:00	14

Classic Country LOCAL Clock





On-Air Personalities

Programming Bios



RICK MORGAN
(6a-10a eastern)

MORGAN IN THE MORNING has always been a morning person so this job is perfect for him. In fact, he credits it with keeping his marriage together for 26 years. His wife says if he was at the breakfast table everyday she'd been out of there long ago. His daughters will second that. The boy does like to talk! He started waking people up on the radio years ago when he realized that he didn't have to sweat. And now 'Morgan in the Morning' enjoys misbehaving with his listeners on a daily basis. "The free coffee and internet ain't bad either," he says.



ASHLEY BLAKE
(10a-3p eastern)

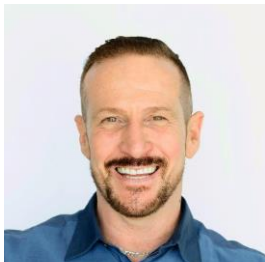
Country music runs deep in my roots. As a young girl, my parents would listen to vinyl records of George Jones, Tammy Wynette, Bill Anderson and others on our turntable. In 1989, I waltzed into a radio and said, "I want to be on the air." I was told to show up at midnight on Saturday and the rest is history. Lite Rock is where I started. However, when I got my first taste of being on a country station. It was like Strawberry Wine. I never looked back. Country music has taken me down the back roads of Illinois. I stayed in the Midwest, until all four of my daughters had attended K-12 at the same school. One by one, they moved to Texas. When the last one graduated in 2020, I followed her to Fort Worth. I have been doing what I love for more than 30 years and I'm blessed to spend my days with you!

Programming Bios



MIKE SHEFFIELD
(3p-8p eastern)

Hi I'm Mike Sheffield and I think it's pretty awesome I get to spend some time with you on the radio. At home lots and lots of grilling takes place. Like this radio thing. Grilling is another one of my passions. "Grilling brings out the natural flavors of food. Meats and veggies including fruit. There's something about that char. I love it all!" I try to keep in shape by training in many forms of Martial Arts. "Keeps you balanced and Prepared". "Training is intense. Tossing log skidder tires, climbing rope and standing walls, shimmying across a rope over ponds to weapons training". "It's important to merge Mind, Body and Soul, and this for me is how I do that". It's not about getting big muscles. It's about harmony. Yeah, I know...my trainer is a Navy Seal. So, yeah...intense.



KEITH ANDREWS
(8p-1a eastern)

Hey it's Keith, and I've been playing DJ since the age of 8...with my trusty tape recorder (if anyone remembers those) . Professionally though, I've been at it since college, where my voice has landed me in a host of markets across the country...from Aspen to Cape Cod , Kalamazoo, Boston and Dallas among other places. My love of Country Music was solidified in Dallas by working with the great 99-5 The Wolf!

Programming Bios



KEVIN FREEMAN
(1a-6a eastern)

I caught the radio bug at a young age. As a kid he would lay in bed at night listening to stations from Chicago, Cincinnati, Nashville and Pittsburgh. Then as a teenager, he got to work at his high school radio station. FYI, I'm slightly taller than Kenny Chesney and about a foot shorter than Trace Adkins. In 1984 I married my high school sweetheart. I have 3 daughters, 3 sons-in-law, and 5 grandchildren. When I'm not on the air playing my favorite music (country) or hanging out with my family, I enjoy working outside. I love getting on my tractor and mowing. It is like therapy to me! I am also actively involved in my church, and serve on the board of an inner city community center.

THANK YOU!

For more information on Real Country and affiliating in your market, contact:

George King, VP/GM Network Formats
gking@westwoodone.com | 720.873.5128

Neal Weiner, VP of Affiliate Sales Formats
nweiner@westwoodone.com | 206.706.1373